

Land Auction

Davis County, Iowa

40⁺
*acres,
1 tract*

Bloomfield, Iowa

THURSDAY, DECEMBER 30, 2021 AT 10AM



ONLINE BIDDING AVAILABLE



Auctioneer's Note: Here is an opportunity, the Seller has signed this farm up for the CRP program. The Buyer will be responsible for planting the CRP. The Buyer would also have the option to take the land out of CRP and pay the associated penalties & fees to do so.

Land is located 2 miles north of Bloomfield on Highway 63, then 1 ¼ miles east on 195th Street/County Hwy-J37, then ½ mile north on Nutmeg Avenue, then 1 ¼ miles east on 190th Street, then 1 mile north on Peach Avenue, then ½ mile east on 180th Street.

**Auction to be held at Southfork Motel & Grill, Banquet Room,
907 South Washington Street, Bloomfield, Iowa 52537**

40 ACRES M/L - SUBJECT TO FINAL SURVEY

Approx. 32 acres tillable of which approx. 30 acres are in CRP as follows:
30 acres X \$160.62 = \$4,818.60 and expires on 9-30-2031.

(Contract enrolled 10-1-2021)

Corn Suitability Rating 2 is 46 on the tillable acres.

Land has a pond.

Located in Sections 10 & 11, Perry Township, Davis County, Iowa.

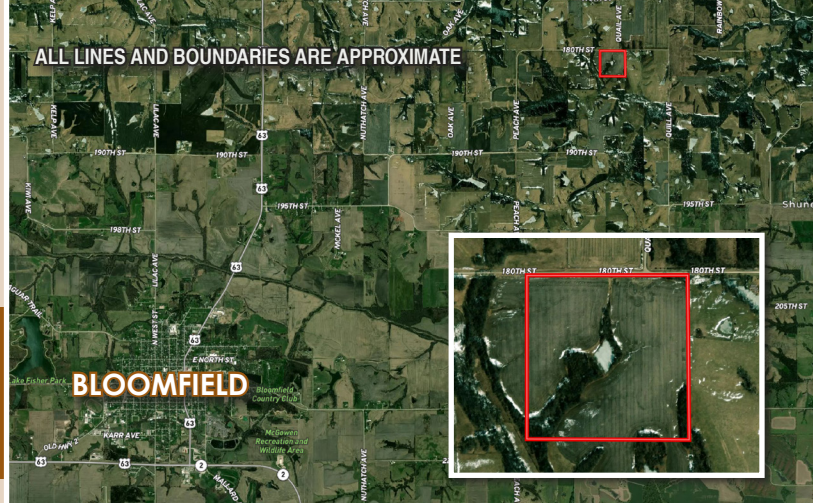
RICHARD P. WILCOX

Rick L. Lynch – Attorney for Seller

For information contact Steffes Group at 319.385.2000;
Mason Holvoet, 319.470.7372 or Nate Larson, 319.931.3944

319.385.2000 | SteffesGroup.com

ALL LINES AND BOUNDARIES ARE APPROXIMATE



2245 East Bluegrass Road
Mt. Pleasant, IA 52641

PRESORTED
MARKETING
US POSTAGE
PAID
PERMIT #315
FARGO, ND